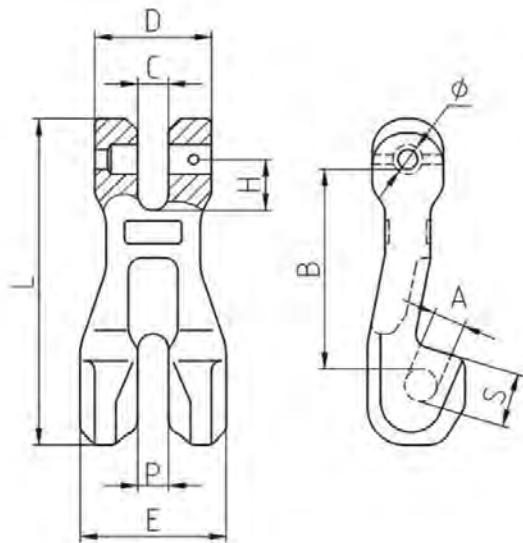


CLEVIS CHAIN SHORTENING CLUTCH



- Forged super alloy steel; Quenched & Tempered
- 100% Magnaflux Crack Detection
- Individually proof-tested at 2.5X Working Load Limit
- Fatigue tested at 1.5X Working Load Limit for 20,000 cycles
- Load pins are 100% individually inspected & tested



Model	W.L.L.	B.L	A±0.3 (mm)	B±2 (mm)	C±0.5 (mm)	D±1 (mm)	E±2 (mm)	H±1 (mm)	L±2 (mm)	φ±0.5 (mm)	P±0.5 (mm)	S±0.3 (mm)	Weight (kg/pc)
8-TP819-06	1.12T	4.48T	8	44	7.5	30	32.8	11.8	73.5	7.8	7.5	12	0.18
8-TP819-7/8	2T	8T	10.5	61.7	9.5	36	45	15.7	101	9.2	9.5	17	0.45
8-TP819-10	3.15T	12.6T	12.4	92	13	48	55	20	138	13.2	13	28	0.93
8-TP819-13	5.3T	21.2T	16	115	16.5	59	75	24.5	177	16.2	16.5	34.5	1.88
8-TP819-16	8T	32T	19.5	143	21	73	93	30.5	220	20	21	40	3.5
8-TP819-18/20	12.5T	50T	23	152	23.5	81	102	36	238	24.3	23.5	46	4.43
8-TP819-22	15T	60T	26	195	25.5	98	118	42	295	28.1	25.5	57.5	8.05