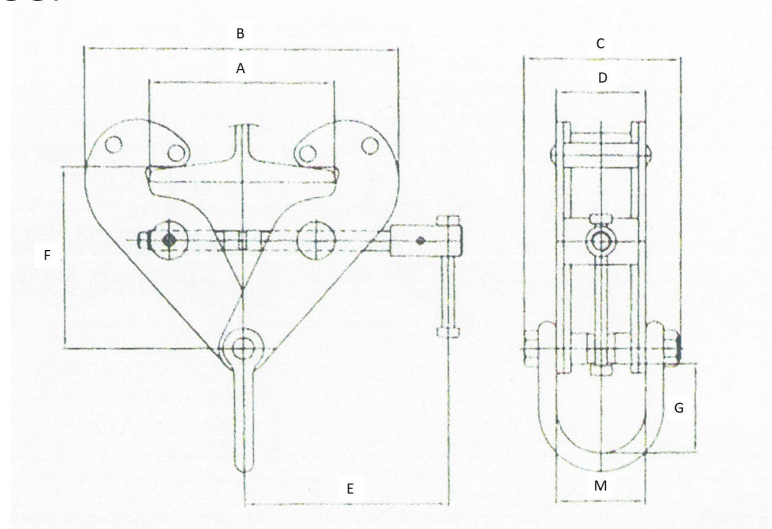


Beam Clamp with Shackle - JTS Type



- Designed for secure grip on attached Beam
- High Quality Alloy Steel



*All dimension in MM, unless otherwise specified

WLL (TONS)	ADJUSTABLE BEAM	A (MAX)	B (MAX)	B (MIN)	C	D	M	E	F (MAX)	F (MIN)	G	WEIGHT (KG)
1	70-245	270	375	183	144	66	84	210	165	102	91	4.5
2	70-245	270	375	183	144	74	84	210	165	102	91	5.5
3	70-355	365	520	240	210	103	125	258	225	135	108	11.5
5	70-355	365	520	240	210	111	125	258	225	135	108	15.51
10	80-350	365	520	250	270	120	161	280	230	160	176	26