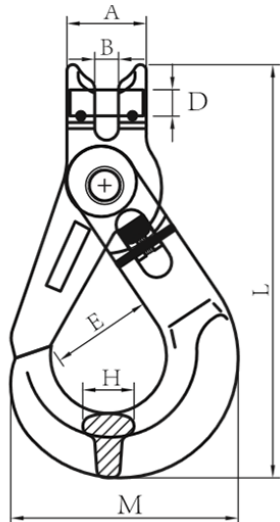


CLEVIS SELF LOCKING HOOK – SIDE TRIGGER TYPE



Side Triggering

- Side-Triggering mechanism for easy access
- Forged super alloy steel; Quenched & Tempered
- Suitable for EN812-2 G80 Chain
- 100% Magnaflux Crack Detection
- Individually proof-tested at 2.5X Working Load Limit
- Fatigue tested at 1.5X Working Load Limit for 20,000 cycles
- Surface Finish: Powder Plastified
- Positive lock latch is self-locked when hook is loaded



ITEM NO.	WWL (Tons)	Breaking Load (Tons)	A±0.5	B±0.5	E±0.5	M±0.5	H±0.3	L±1.5	D±0.1	Weight (Kg)
SLR663-7/8-8	2	8	31.5	9	38.5	90	20	164	10.5	0.792
SLR663-10-8	3.15	12.6	45	12	48.3	118	22	206	14.7	2.25
SLR663-13-8	5.3	21.2	59	15	60	153	33	260	18.5	4.57