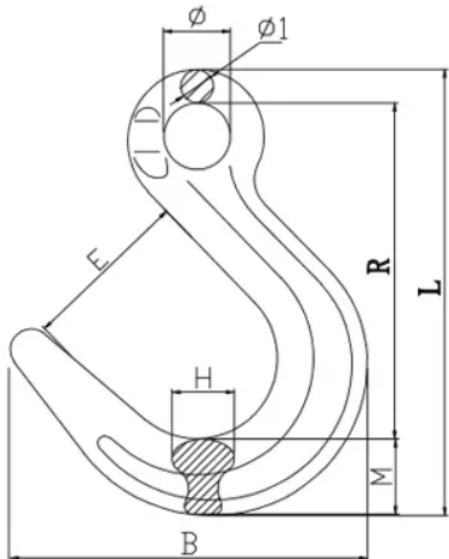


EYE FOUNDRY HOOK – G100 TYPE



- Forged super alloy steel; Heat Treated
- 25% increased performance compared to G80 Type
- Suitable for G100 Chain
- 100% Magnaflux Crack Detection
- Individually proof-tested at 2.5X Working Load Limit
- Surface Finish: Powder Plastified



Item Code	WWL (Tons)	Breaking Load (Tons)	$\phi \pm 1$	$L \pm 3$	$B \pm 2$	$R \pm 2$	$E \pm 1$	$\phi 1 \pm 1$	$H \pm 2$	M	Weight (kg)
1074-6	1.4	5.6	20.5	133	100	102.7	49	10	17	19	0.382
1074-8	2.4	9.6	24	158.5	130	120.5	62	12	19	27.5	0.72
1074-10	4	16	31.5	199	152.5	153.2	73	15	25	31	1.25
1074-13	6.7	26.8	44	241.5	186	184	90	19	33	39.3	2.32
1074-16	10	40	49	279	218	216	105	22	37	42	3.45