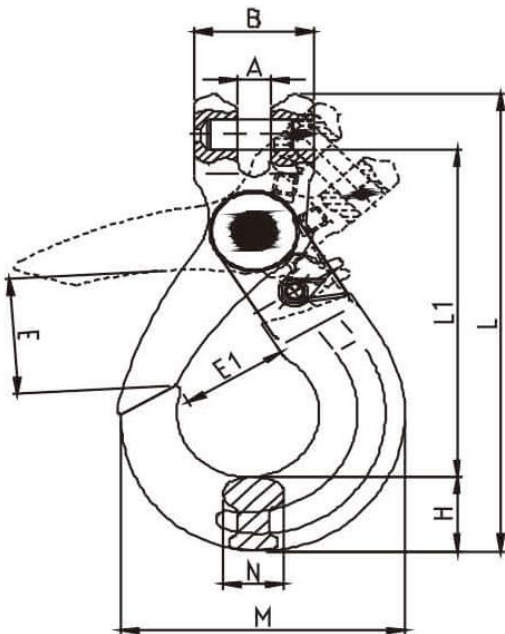


# CLEVIS SELF LOCKING HOOK



- Forged super alloy steel; Quenched & Tempered
- Suitable for EN812-2 G80 Chain
- 100% Magnaflux Crack Detection
- Individually proof-tested at 2.5X Working Load Limit
- Fatigue tested at 1.5X Working Load Limit for 20,000 cycles
- Surface Finish: Powder Plastified
- Positive lock latch is self-locked when hook is loaded



Model	W.L.L.	B.L	A (mm)	B (mm)	E (mm)	E1 (mm)	L1 (mm)	L (mm)	H (mm)	N (mm)	M (mm)	Weight (kg/pc)
8-TP808-06	1.12T	4.48T	8±0.5	32±1	32±2	28±1	99±3	134±3	20±1	15±0.5	73±2	0.44
8-TP808-7/8	2T	8T	9.5±0.5	38.5±1	40±3	35±1	119±3	162±3	26±1	20±0.5	91±2	0.80
8-TP808-10	3.15T	12.6T	12.5±0.5	46±1	48±3	45±2	142±3	195±3	30±1.5	26±1	108±2	1.38
8-TP808-13	5.3T	21.2T	15±0.5	59±1	57±3	52.5±2	179±4	248±4	40±1.5	33±1	142±3	2.81
8-TP808-16	8T	32T	18.5±0.5	77±1.5	65±4	63±2	225±4	310±4	50.5±2	38±2	168.6±3	6.00
8-TP808-18/20	12.5T	50T	24±1	81±1.5	82±4	82±2	238±5	335±5	55±2	50±2	185±4	7.25
8-TP808-22	15T	60T	25±1	97.5±2	80±5	76±3	277±5	392±5	67±2	52±2	202±4	12.8
8-TP808-26	21.2T	84.8T	30±1.5	118±2	109±5	96±4	312±6	449±6	75±3	60±3	239±5	21.8
8-TP808-32	31.5T	126T	35±1.5	150±2	131±6	131±4	416±6	590±6	97±3	79.5±3	329±5	49.6