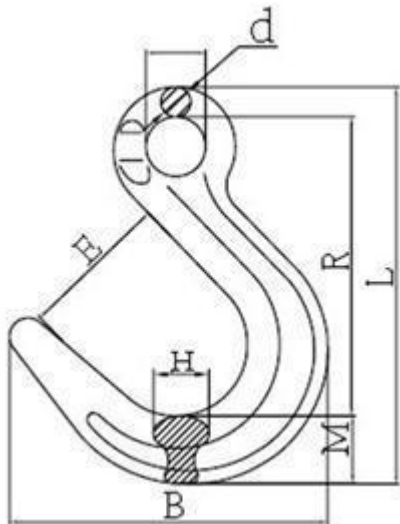


EYE FOUNDRY HOOK - G80 TYPE



- Forged super alloy steel; Quenched & Tempered
- Suitable for EN812-2 G80 Chain
- 100% Magnaflux Crack Detection
- Individually proof-tested at 2.5X Working Load Limit
- Fatigue tested at 1.5X Working Load Limit for 20,000 cycles
- Surface Finish: Powder Plastified

*Units in mm



| WWL (Tons) | Breaking Load (Tons) | D | L | B | R | E | d | H | M | Weight (kg) |
|------------|----------------------|------|-------|-------|-------|-----|----|----|------|-------------|
| 1.12 | 4.48 | 20.5 | 133 | 100 | 102.7 | 49 | 10 | 17 | 19 | 0.382 |
| 2 | 8 | 24 | 158.5 | 130 | 120.5 | 62 | 12 | 19 | 26 | 0.72 |
| 3.15 | 12.6 | 31.5 | 199 | 152.5 | 153.2 | 73 | 15 | 25 | 31 | 1.25 |
| 5.3 | 21.2 | 44 | 241.5 | 186 | 184 | 90 | 19 | 33 | 38.5 | 2.32 |
| 8 | 32 | 49 | 279 | 218 | 216 | 105 | 22 | 37 | 41 | 3.45 |
| 12.5 | 50 | 60 | 330 | 252 | 247 | 114 | 26 | 46 | 57 | 6.42 |